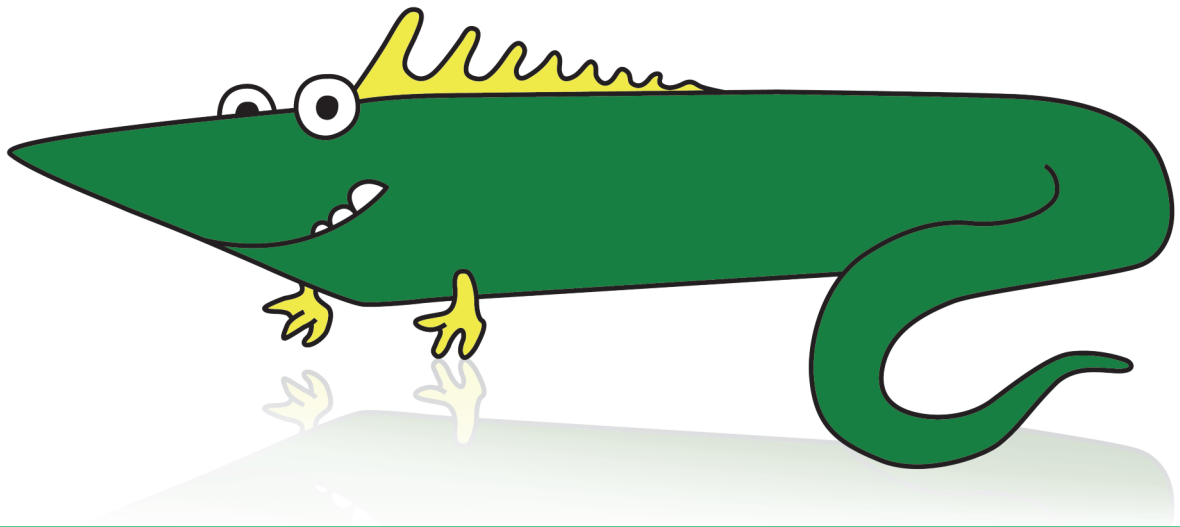


easy-slide KIDS

simply smile

The ultimate donning aid for arm- and leg sleeves for children



Problem definition

For both parents and children, the problem of donning arm- and leg sleeves is one which occurs on a daily basis. For parents, donning and removing arm- and leg sleeves for children is a major source of physical strain. This often has a direct effect on therapy compliance.

Solution

Easy-Slide Kids has been specifically designed to alleviate the problems experienced when donning arm- and leg sleeves for children. Easy-Slide Kids is made from very smooth material, which has been treated with a special coating. These qualities create a super-smooth aid that reduces friction significantly.

The friction reduction of Easy-Slide Kids helps minimize the physical strain otherwise experienced by parents and children. In turn, this has a positive effect on the therapy compliance of children.

Users

Easy-Slide Kids provides an effective solution for children who wear arm- or leg sleeves. Thanks to Easy-Slide Kids, hosiery can now be donned without difficulty.

Furthermore, Easy-Slide Kids is an essential aid for parents who are faced with the prospect of donning their children's arm- or leg sleeves on a daily basis.

Easy-Slide KIDS

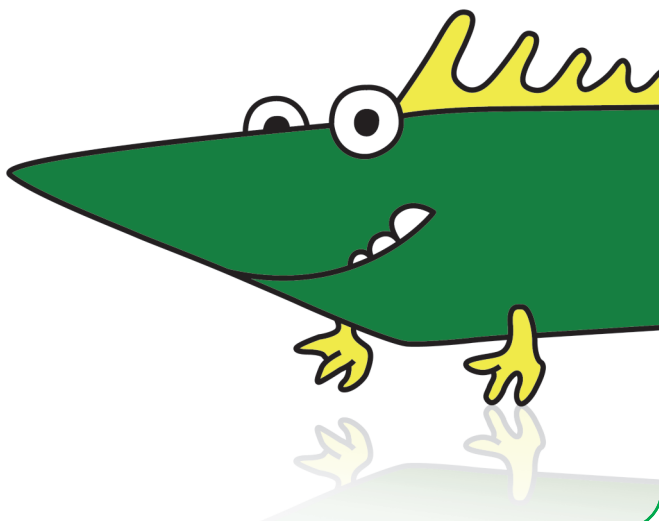
Product benefits

- Reduction of physical strain for both parent and child
- Stockings retain therapeutic graduated compression longer
- Easy to use
- Saves time and money
- Durable
- Take it anywhere
- Hand washable at 30° degrees
- A friend for the Child

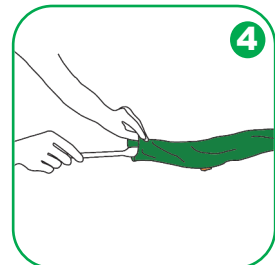
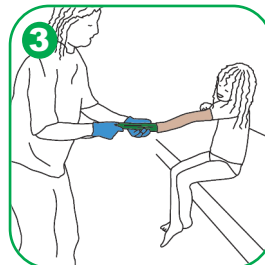
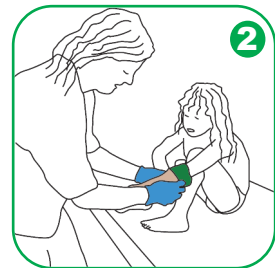
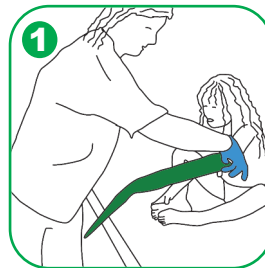


Product range

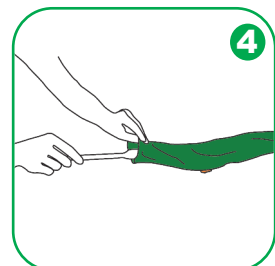
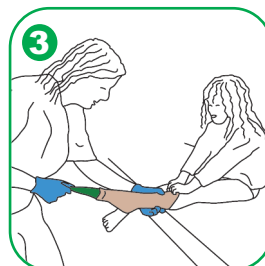
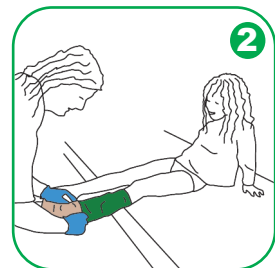
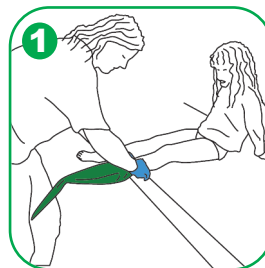
Art. No.	Size	Age	Length
E01700	Extra Small	0-3 Year	29,5 cm
E01701	Small	3-6 Year	39,5 cm



Putting on the arm sleeve



Putting on the leg sleeve



- 1 Slide the arm or leg of the child in the Easy-Slide Kids
- 2 Slide the arm or leg sleeve over the Easy-Slide Kids
- 3 Remove the Easy-Slide Kids gently out of the arm or leg sleeve and hold against at the top of the sleeve
- 4 Fold the first piece of the Easy-Slide Kids back and bring the Easy-Slide Kids back to its original state if necessary by using a ladle